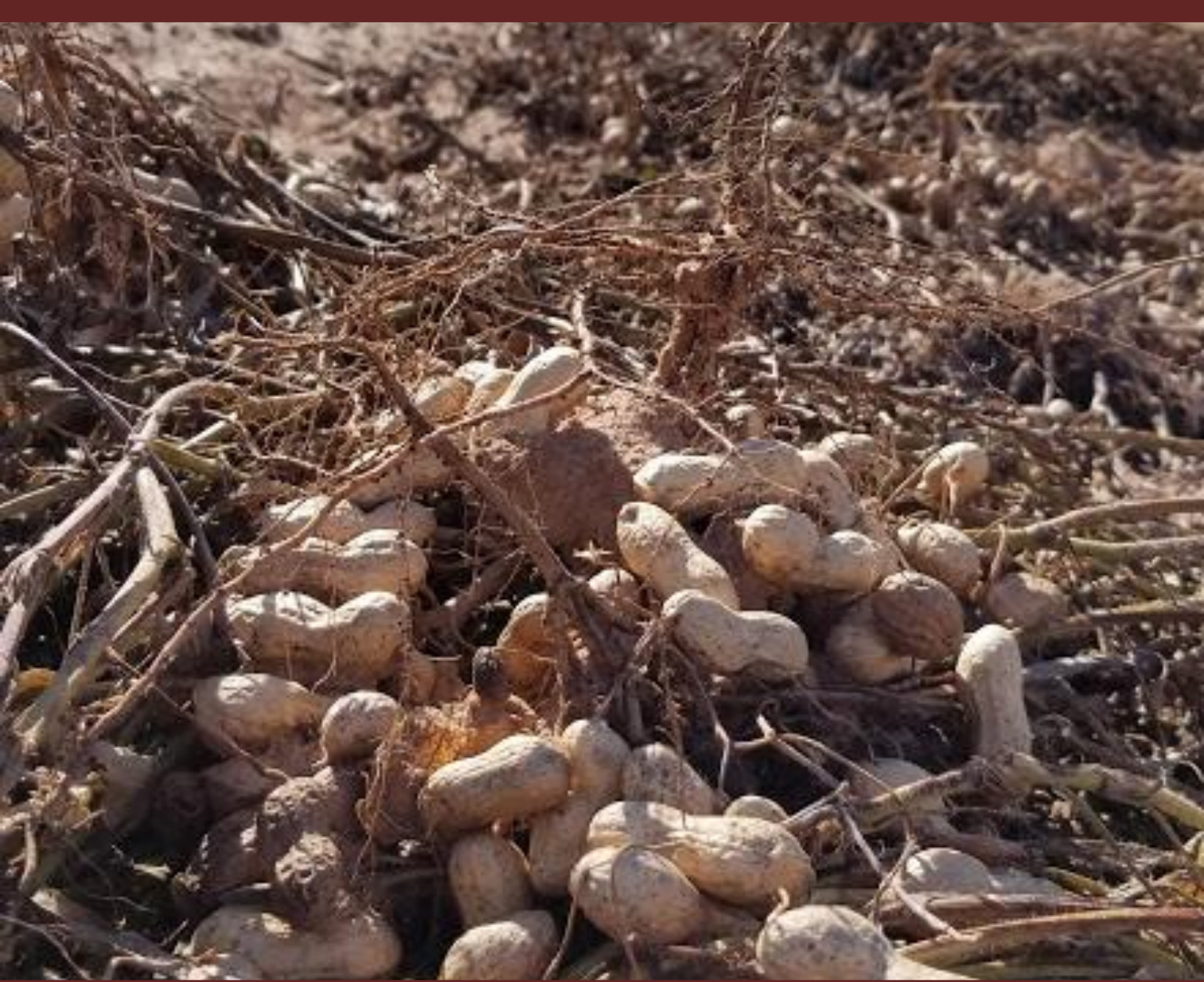


TEXAS PEANUT VARIETY TRIALS | 2018



TEXAS PEANUT VARIETY TRIAL | 2018

CONTRIBUTING AUTHORS

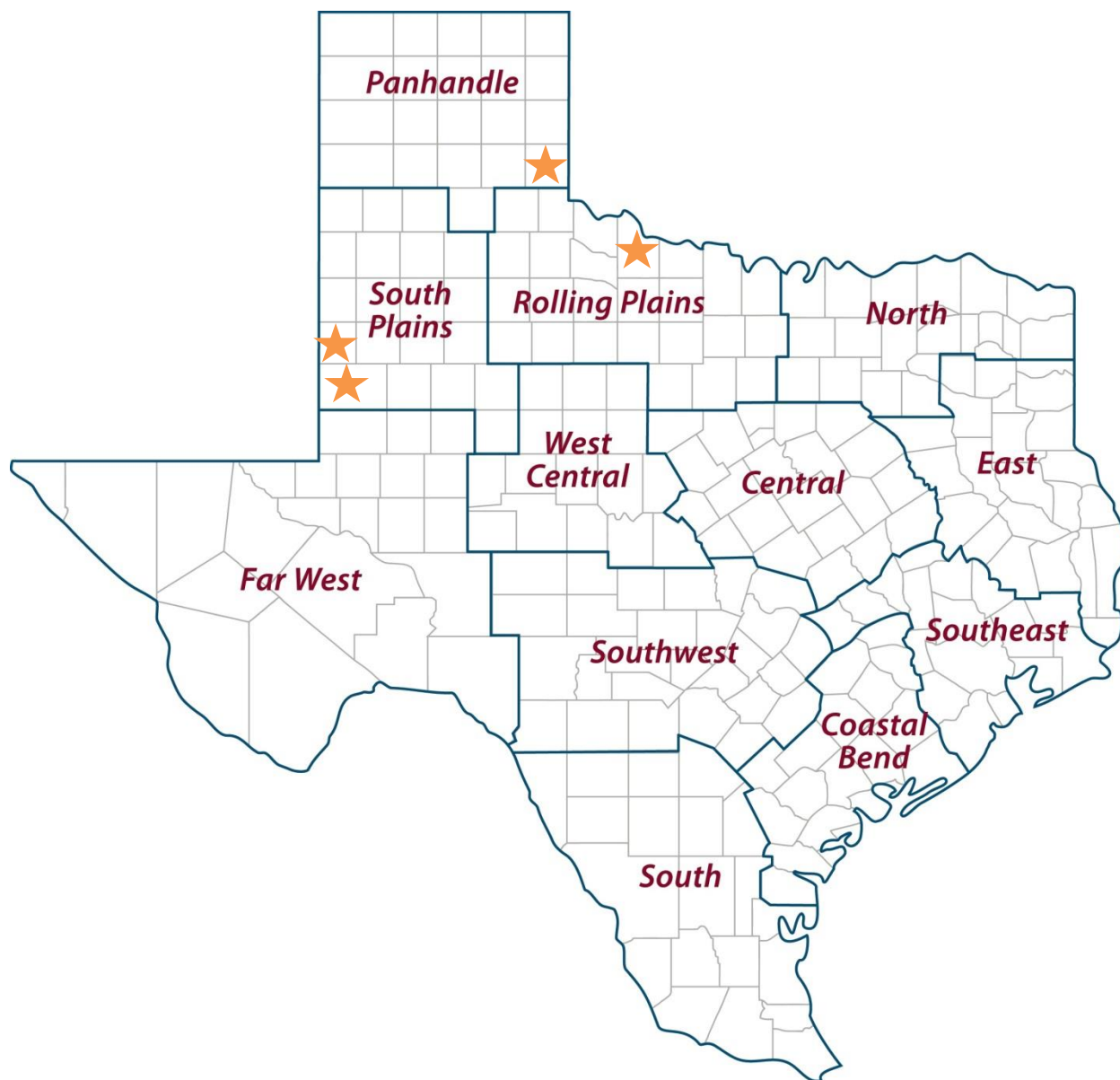
Dr. Emi Kimura	State Peanut Specialist	AgriLife Extension, Vernon, TX
Dr. John M. Cason	Senior Research Associate	AgriLife Research, Stephenville, TX
Dr. Charles E. Simpson	Professor Emeritus	AgriLife Research, Stephenville, TX
Mr. Michael Baring	Assistant Research Scientist	AgriLife Research, College Station, TX
Dr. Katie Lewis	Soil Chemistry and Fertility Scientist	AgriLife Research, Lubbock, TX
Dr. Jason Woodward	Former State Peanut Specialist	AgriLife Extension, Lubbock, TX
Dr. Terry Wheeler	Research Pathologist	AgriLife Research, Lubbock, TX
Dr. James Grichar	Senior Research Scientist	AgriLife Research, Yoakum, TX
Mr. Dwayne Drozd	Technician	AgriLife Research, Yoakum, TX
Jonathan Ramirez	Extension Associate	AgriLife Extension, Vernon, TX
Tamara Royer	Technician	AgriLife Extension, Vernon, TX
Ira Yates	Technician	AgriLife Extension, Lubbock, TX
Dabra Dobitz	Technician	AgriLife Extension, Lubbock, TX
Dustin Kelley	Technician	AgriLife Research, Lubbock, TX
Kenny Patterson	County Extension Agent	AgriLife Extension, Collingsworth Co., TX
Langdon Reagan	County Extension Agent	AgriLife Extension, Wilbarger Co., TX
Terry Millican	County Extension Agent	AgriLife Extension, Gaines Co., TX
Geoff Cooper	County Extension Agent	AgriLife Extension, Terry Co., TX

ACKNOWLEDGEMENTS

Appreciation is expressed to the cooperators who provided their land, equipment, and time in assisting for preparation, planting, field management, and harvesting of these plots throughout the year. All cooperators are listed in Table 3. We would like to extend our appreciation to **National Peanut Producers Board** through the **Texas Peanut Producers Board** for their funding of these trials. We appreciate peanut industry for providing support for the trials.

2018 HIGHLIGHT

Variety selection is the most important decision made during the year. Unlike herbicide or insecticide decisions that can be changed during the season to address specific conditions and pests, variety selection is made only once, and variety selection dictates the management of a field for the entire season. Variety decisions should be based on specific pest resistant characteristics to minimize the pest pressure during the season. Maturity is also important variety characteristic for maximizing yield potential based on the environment. Planted acres decreased to 155,000 acres in 2018 from 275,000 acres in 2017. Winter drought of 2017 severely affected the planting conditions in the 2018 season. Dry weather continued until September across Texas. Due to the dry condition, in-season disease pressure was below average. Excessively wet conditions started near the end of September and continued to November, which delayed digging and harvesting of peanuts beyond the optimal timing in many locations. Peanut production in Texas experienced a challenging growing season with both extreme drought and wet conditions within a single growing season.



TEXAS PEANUT VARIETY TRIAL LOCATIONS

Collingsworth County

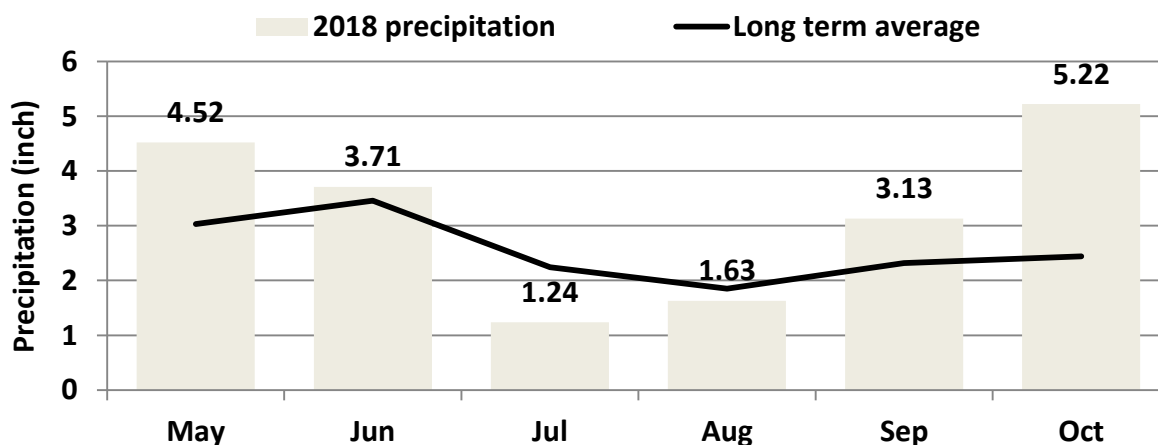
Cooperator: Rex Henard

County Extension Agent: Kenny Patterson

Soil type: Sandy soil

Planting/Digging/Harvest dates: May 8/ Oct.4/ Oct. 23

Previous crop: Cotton



Collingsworth co. Runner type variety

Variety	Yield lb/ac		ELK %		Med %		#1 %		DK %		OK %		TSMK %	
FloRun331	4783	a	39.0	a	20.71	a	3.602	a	0.00	a	4.7	a	74.7	a
TufRunner511	4392	a	48.9	a	10.74	a	2.098	a	0.03	a	2.9	a	76.0	a
TufRunner297	4350	a	48.8	a	14.48	a	2.0	a	0.00	a	3.9	a	76.3	a
IPG QR14	3916	a	33.6	a	24.91	a	5.3	a	0.38	a	3.5	a	75.2	a
RedRiverRunner	3888	a	35.0	a	22.09	a	5.8	a	0.12	a	4.3	a	75.2	a
Lariat	3836	a	36.5	a	19.88	a	3.1	a	0.05	a	4.2	a	76.7	a
Georgia09B	3822	a	46.6	a	13.91	a	1.3	a	0.32	a	3.6	a	76.6	a
CWBY5202	3609	a	38.6	a	18.74	a	2.5	a	0.55	a	4.4	a	73.0	a
Georgia14N	3482	a	40.3	a	17.35	a	2.2	a	0.18	a	4.0	a	77.7	a
Means	4009		40.8		18.1		3.1		0.18		4.0		75.7	
CV	19		37		62		127		114		38		4	
P _{0.1}	NS		NS		NS		NS		NS		NS		NS	

Collingsworth County

Collingsworth co. Spanish type variety

Collingsworth	Yield		ELK		Med		#1		DK		OK		TSMK	
Spanish	lb/ac		%		%		%		%		%		%	
TamnutOL06	5531	a	19.3	a	30.18	a	11.0	a	0.335	a	3.0	a	82.75	a
ACI236	5279	a	39.61	a	19.81	a	2.3	a	0.08	a	5.1	a	74.64	a
AT9899	4910	a	14.43	a	38.75	a	11.9	a	0.425	a	2.8	a	73.51	a
Ole	3794	a	24.53	a	22.0	a	6.9	a	1.137	a	2.3	a	71.53	a
Means	4878		24.5		27.7		8.0		0.49		3.3		75.6	
CV	21		63		49		86		62		49		12	
P _{0.1}	NS		NS		NS		NS		NS		NS		NS	

Collingsworth co. Virginia type variety

Collingsworth	Yield		ELK		Med		#1		DK		OK		TSMK	
Virginia	lb/ac		%		%		%		%		%		%	
Sullivan	4728	a	35.13	a	27.6	a	3.0	a	0.18	a	3.2	a	73.4	a
Jupiter	4676	a	32.79	a	26.2	a	3.7	a	0.259	a	3.3	a	71.0	a
FloridaFancy	3351	a	40.26	a	21.0	a	3.2	a	0.219	a	1.8	b	74.1	a
Means	4252		36.1		24.9		3.3		0.22		2.7		72.8	
CV	25		23		47		47		124		16		3	
P _{0.1}	NS		NS		NS		NS		NS		0.0055		NS	

Wilbarger County

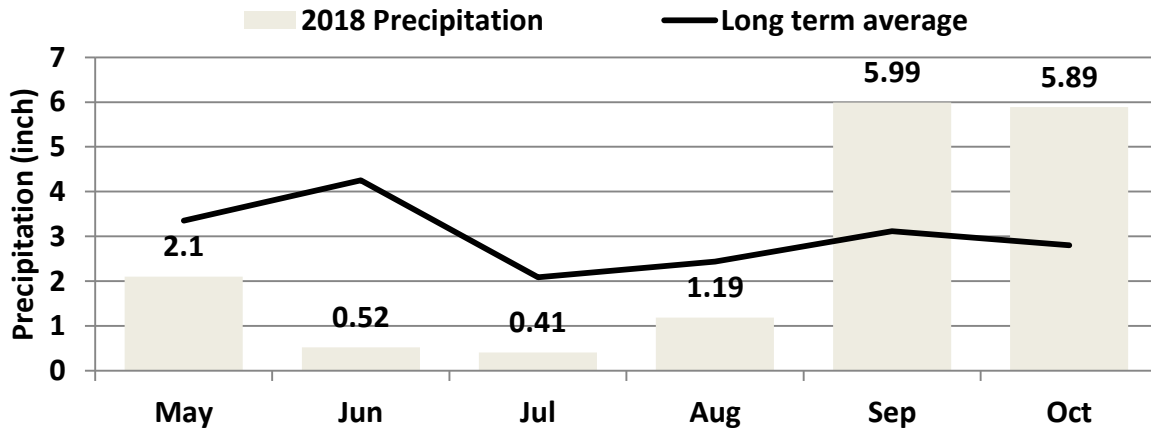
Cooperator: Clint White

County Extension Agent: Langdon Reagan

Soil type: Sandy

Planting/Digging/Harvest dates: May 8/ Oct./ Oct. 29

Previous crop: Peanut



Wilbarger co. Runner type variety

Wilbarger	Yield		ELK		Med		#1		DK		OK		TSMK	
RUNNER	lb/ac		%		%		%		%		%		%	
Georgia14N	4312	a	43.4	ab	26.1	bcd	4.1	a	0.27	a	2.2	a	76.5	a
FloRun331	4292	ab	38.1	b	29.3	b	3.3	a	0.38	a	2.1	a	74.0	abc
Georgia09B	4178	ab	36.0	b	28.2	bc	4.9	a	0.35	a	2.3	a	72.0	cd
IPG QR14	4133	ab	15.4	c	44.9	a	6.4	a	0.45	a	2.8	a	70.9	d
IPG 1210914	3904	abc	47.2	ab	23.5	bcd	2.9	a	0.16	a	2.2	a	75.6	ab
MISC0476	3659	abc	24.0	c	39.5	a	4.1	a	0.24	a	2.4	a	71.6	cd
TufRunner511	3512	bcd	53.8	a	18.2	d	1.5	a	0.71	a	0.9	a	75.1	ab
TufRunner297	3189	cd	46.6	ab	21.2	bcd	2.8	a	0.17	a	1.9	a	74.3	abc
Lariat	2834	d	40.7	b	29.8	b	2.3	a	0.12	a	1.6	a	76.5	a
CWBY5202	1711	e	42.7	ab	19.2	cd	2.6	a	0.28	a	1.6	a	72.0	cd
FLEXP	1458	e	40.5	b	26.2	bcd	3.3	a	0.26	a	1.3	a	73.4	bcd
Means	3380		39.0		27.8		3.5		0.31		1.9		73.8	
CV	20		25		29		62		70		46		3	
P _{0.1}	0.0001		0.0003		0.0012		NS		NS		NS		0.0168	

Wilbarger County

Wilbarger co. Spanish type variety

Wilbarger	Yield		ELK		Med		#1		DK		OK		TSMK	
Spanish	lb/ac		%		%		%		%		%		%	
Schubert	5080	a	37.9	a	29.6	b	2.1	c	0.14		1.8	b	75.2	a
ACI236	3010	a	19.5	b	45.3	a	5.1	c	0.29		3.5	b	72.8	a
AT9899	2758	a	4.6	c	35.1	b	23.6	a	0.54		6.1	a	67.0	b
Ole	2671	a	7.0	c	45.8	a	12.3	b	0.45		3.0	b	68.1	b
Means	3380		17.3		39.0		10.8		0.35		3.6		70.8	
CV	29		31		7		21		52		19		2	
P _{0.1}	NS		<.0001		0.0002		<.0001		NS		0.0003		0.0003	

Wilbarger co. Virginia type variety

Wilbarger	Yield		ELK		Med		#1		DK		OK		TSMK	
Virginia	lb/ac		%		%		%		%		%		%	
FloridaFancy	3826	a	53.2	a	14.1	b	1.9	a	1.14	a	1.2	a	73.4	a
ACI442	3737	b	49.4	a	12.8	b	2.5	a	0.31	a	1.7	a	70.9	a
VT1	3116	c	55.8	a	9.6	bc	1.4	a	0.54	a	0.7	a	72.4	a
Jupiter	2871	c	55.2	a	10.9	bc	1.5	a	0.98	a	0.7	a	72.0	a
VT7	2846	cd	54.3	a	11.0	bc	1.8	a	0.59	a	1.0	a	71.5	a
VT4	2799	cd	40.7	a	19.6	a	5.4	a	0.29	a	1.9	a	70.6	a
ACIX351	2573	cd	53.3	a	10.2	bc	1.1	a	0.20	a	0.8	a	72.4	a
VT8	2524	cd	54.0	a	9.7	bc	1.9	a	0.64	a	1.2	a	70.8	a
VT5	2473	cd	54.9	a	10.9	bc	1.4	a	0.88	a	0.8	a	71.1	a
ACI433	2450	cd	51.8	a	12.0	b	1.5	a	0.78	a	0.9	a	71.8	a
AL464	2373	cd	53.4	a	8.1	c	1.6	a	0.83	a	0.7	a	70.9	a
VT3	1964	d	51.1	a	10.8	bc	1.9	a	0.80	a	2.0	a	68.4	a
ACI1850	1956	d	53.7	a	7.4	c	2.0	a	0.68	a	0.8	a	71.6	a
VT2	1932	d	49.9	a	12.8	b	1.7	a	0.72	a	45.6	a	69.3	a
Means	2674		52.2		11.4		2.0		0.67		4.3		71.2	
CV	26		12		28		89		72		56		3	
P _{0.1}	0.004		NS		0.0035		NS		NS		NS		NS	

Gaines County

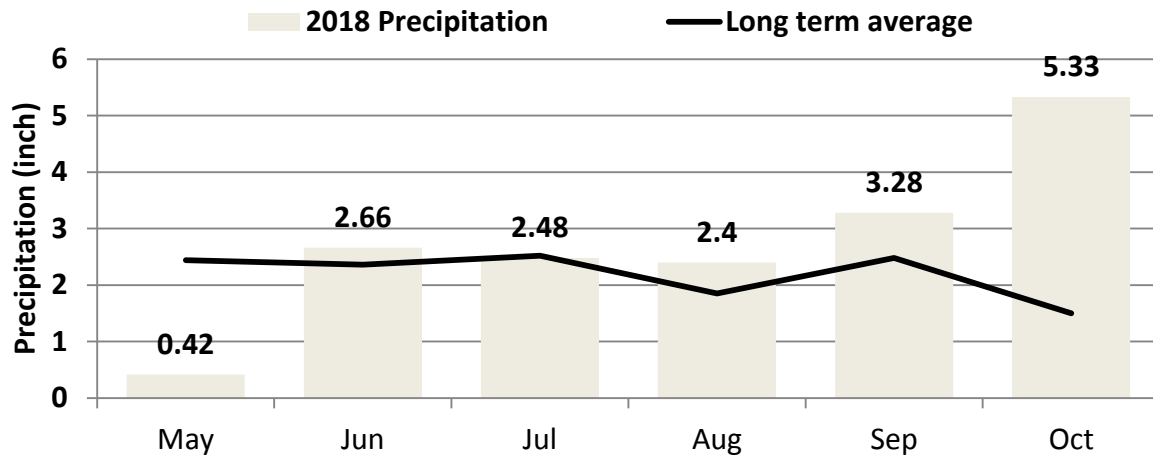
Cooperator: Chuck Rowland

County Extension Agent: Terry Millican

Soil type: Sandy

Disease rating: Sep 28

Planting/Digging/Harvest dates: May 2/ Oct.8/ Oct. 30 (Spanish), Nov. 5 (Runners and Virginias)



Gaines County

Gaines co. Runner type variety

Gaines	Yield		ELK		Med		#1		DK		OK		TSMK		Vert		LS	
Runner	lb/ac		%		%		%		%		%		%		%		1-10	
Webb	5979	a	39.4	a	9.4	fg	1.2	a	0.56	a	1.8	b-f	77.9	a	33	a	2.4	a
TamrunOL11	5934	a	35.2	a	17.8	abc	1.5	a	0.54	a	1.6	def	76.1	a	32	a	2.6	a
TX4342	5864	a	37.8	a	11.0	efg	1.7	a	0.85	a	1.6	def	75.3	a	35	a	3.1	a
IPG 1210914	5791	a	38.6	a	10.8	efg	1.0	a	0.29	a	1.8	b-f	75.6	a	28	a	3.5	a
TR157	5738	a	36.6	a	11.9	e-g	1.6	a	1.01	a	2.2	a-e	75.4	a	31	a	3.4	a
Lariat	5713	a	37.6	a	11.3	d-g	1.8	a	1.24	a	1.5	ef	77.0	a	27	a	2.8	a
IPG QR14	5652	a	29.7	a	23.1	a	2.8	a	1.06	a	2.3	a-d	76.8	a	25	a	3.0	a
TufRunner511	5636	a	42.3	a	7.9	g	1.3	a	1.20	a	1.6	def	75.0	a	33	a	1.9	a
Georgia14N	5517	a	40.2	a	10.0	efg	1.1	a	0.96	a	1.3	f	77.2	a	31	a	3.3	a
Georgia13M	5493	a	38.0	a	11.9	d-g	1.2	a	0.90	a	2.4	abc	73.6	a	19	a	3.1	a
RedRiverRunner	5411	a	37.6	a	11.6	d-g	1.8	a	1.52	a	1.7	c-f	76.1	a	30	a	2.8	a
Georgia09B	5360	a	38.7	a	13.8	b-f	1.7	a	0.56	a	2.0	b-f	76.8	a	33	a	4.0	a
TufRunner297	5280	a	35.7	a	18.2	ab	1.5	a	0.25	a	2.3	a-d	76.6	a	32	a	4.9	a
Florun107	5276	a	35.2	a	13.7	b-g	1.9	a	0.96	a	2.8	a	73.4	a	29	a	3.0	a
TX4429	5268	a	37.2	a	8.6	g	0.8	a	0.49	a	1.4	f	77.2	a	32	a	4.3	a
TX1082	5223	a	35.9	a	12.0	c-g	1.4	a	0.61	a	1.7	c-f	76.2	a	33	a	2.3	a
MISC0476	5219	a	31.6	a	17.0	b-d	1.7	a	0.28	a	2.6	ab	73.8	a	27	a	2.5	a
FloRun331	5170	a	35.4	a	15.6	b-e	1.7	a	0.24	a	1.4	a-f	77.1	a	30	a	4.9	a
FLEXP	4790	a	33.3	a	9.7	efg	1.9	a	0.21	a	2.1	a-r	75.5	a	32	a	3.9	a
Means	5490		36.6		12.9		1.6		0.72		1.9		75.9		29.9		3.2	
CV	13		11		33		39		83		28		4		25		54	
P _{0.1}	NS		NS		0.0103		NS		NS		0.0491		NS		NS		NS	

Gaines County

Gaines co. Spanish type variety

Gaines	Yield		ELK		Med		#1		DK		OK		TSMK		Vert		LS	
Spanish	lb/ac		%		%		%		%		%		%		%		1-10	
ACI1453	5129	a	15.8	cd	39.3	bcd	6.6	b	0.33	a	3.0	a	73.7		0.28	a	3.5	a
Schubert	4941	a	10.2	e	45.6	a	12.4	a	0.48	a	1.5	a	71.9		0.30	a	6.6	a
ACI236	4753	a	34.3	a	14.8	d	1.3	d	0.53	a	2.2	a	77.1		0.36	a	1.7	a
TamnutOL06	4549	a	23.4	b	34.3	e	3.1	cd	0.26	a	1.2	a	73.3		0.29	a	4.4	a
Olin	4304	a	18.5	bc	36.3	cde	3.5	c	0.38	a	2.7	a	74.1		0.30	a	7.1	a
Ole	4194	a	22.4	b	35.4	de	4.0	c	0.22	a	1.5	a	73.8		0.28	a	6.1	a
ACISpan17	4153	a	16.8	c	39.9	bc	4.4	c	0.50	a	1.7	a	77.9		0.33	a	2.9	a
AT9899	3875	a	11.5	de	42.6	ab	7.2	b	0.47	a	2.5	a	73.9		0.34	a	3.8	a
Means	4488		19.1		36.0		5.3		0.40		2.0		74.5		0.3		4.5	
CV	15		22		9		30		59		51		2		21		47	
P _{0.1}	NS		<.0001		0.0001		<.0001		NS		NS		0.0001		NS		NS	

Gaines co. Valencia type variety

Variety	Yield		ELK		Med		#1		DK		OK		TSMK		Vert		LS	
Valencia	lb/ac		%		%		%		%		%		%		%		1-10	
VT10	5158	a	18.7	bcd	43.9	bc	5.2	de	1.12	a	1.7	a	73.4	b	0.5	a	4.5	a
IPG 12-4-274	4133	b	45.1	a	20.8	d	2.3	f	1.11	a	1.0	a	78.9	a	0.3	a	3.4	a
ValenciaA	3757	bc	12.5	cde	46.6	ab	8.4	ab	0.72	a	1.9	a	73.2	bc	0.5	a	6.1	a
IPG 08-4-1288	3524	bc	46.6	a	20.3	d	2.6	f	1.39	a	0.9	a	78.4	a	0.5	a	1.0	a
VT9	3263	cd	19.0	bc	43.3	bc	4.2	e	0.84	a	1.8	a	73.7	b	0.4	a	4.3	a
310	2989	cde	11.4	de	45.9	bc	9.5	a	0.88	a	2.1	a	73.0	bc	0.5	a	4.6	a
308	2654	def	9.9	e	46.4	ab	9.3	a	0.91	a	1.8	a	72.6	bc	0.4	a	2.1	a
Val118	2495	d-g	7.8	e	47.8	ab	10.0	a	1.10	a	2.4	a	71.5	bc	0.6	a	3.9	a
Val136	2389	efg	9.6	e	48.4	ab	7.4	bc	0.90	a	1.9	a	71.8	bc	0.5	a	4.9	a
ValenciaC	2189	fg	20.5	b	40.5	c	6.3	cd	1.08	a	1.8	a	73.8	b	0.6	a	5.1	a
309	1850	g	7.7	e	51.9	a	6.7	cd	0.87	a	1.8	a	70.8	c	0.6	a	3.0	a
Means	3127		19.0		41.4		6.5		0.99		1.7		73.7		0.5		3.9	
CV	21		33		12		21		42		34		3		26		59	
P _{0.1}	<.0001		<.0001		<.0001		<.0001		NS		NS		<.0001		NS		NS	

Gaines County

Gaines co. Virginia type variety

Variety	Yield lb/ac		ELK %		Med %		#1 %		DK %		OK %		TSMK %		Vert %		LS 1-10	
BaileyII	7333	a	50.6	b-g	9.1	a	1.0	a	0.45	a	0.7	a	72.8	a	0.3	g-j	2.3	a
Bailey	6025	b	53.1	a-g	7.0	a	1.2	a	0.65	a	0.8	a	75.6	a	0.3	kl	1.6	a
VT1	5994	b	49.8	c-g	7.7	a	0.8	a	1.10	a	0.7	a	74.4	a	0.5	ab	1.6	a
J20	5937	b	51.2	b-g	7.2	a	1.0	a	0.83	a	0.8	a	72.9	a	0.4	d-i	1.6	a
Georgia11J	5885	b	52.1	a-e	6.5	a	0.7	a	0.86	a	0.5	a	74.8	a	0.2	l	2.0	a
Wynne	5815	b	48.5	efg	9.6	a	1.5	a	0.33	a	1.1	a	75.3	a	0.3	i-k	2.3	a
Sullivan	5776	b	54.0	a-g	8.0	a	1.1	a	0.86	a	0.9	a	74.6	a	0.3	h-k	1.3	a
Suggs	5771	bc	54.7	a-f	7.7	a	1.1	a	1.02	a	0.6	a	75.1	a	0.3	hij	1.5	a
ACI442	5671	bcd	56.6	a-d	5.2	a	0.9	a	0.69	a	0.6	a	74.9	a	0.4	f-i	2.5	a
VT4	5587	bcd	57.7	abc	7.9	a	1.1	a	0.50	a	0.8	a	75.6	a	0.4	c-h	2.0	a
VT3	5570	bcd	57.0	a-d	5.8	a	0.8	a	0.05	a	0.6	a	77.3	a	0.4	b-f	3.4	a
Emery	5535	bcd	49.1	d-g	13.6	a	1.6	a	0.82	a	0.8	a	75.7	a	0.4	e-i	1.8	a
ACI1850	5395	bcd	60.3	a	5.9	a	0.5	a	0.15	a	0.5	a	76.1	a	0.4	c-h	1.6	a
ACIX419	5395	b-e	48.3	efg	7.8	a	1.3	a	1.32	a	0.2	a	73.9	a	0.4	c-f	2.5	a
VT2	5351	b-e	60.3	a	6.2	a	1.1	a	0.40	a	0.5	a	74.9	a	0.4	c-f	2.9	a
AL464	5198	b-f	52.8	a-g	7.7	a	1.2	a	0.87	a	0.6	a	72.1	a	0.4	a-e	3.4	a
ACI433	4861	c-f	46.5	fg	11.6	a	1.8	a	0.75	a	0.9	a	74.3	a	0.5	a-d	3.3	a
VT7	4857	def	50.6	b-g	7.4	a	0.9	a	1.31	a	0.7	a	74.4	a	0.5	a	3.1	a
ACIX351	4800	def	46.0	g	14.5	a	1.7	a	0.79	a	0.8	a	75.4	a	0.4	c-g	2.3	a
VT5	4736	ef	48.6	efg	9.4	a	1.5	a	0.95	a	0.9	a	75.2	a	0.5	ab	3.1	a
FloridaFancy	4695	ef	51.2	b-g	9.7	a	1.0	a	0.43	a	0.7	a	72.9	a	0.3	jkl	2.1	a
VT8	4594	ef	58.1	ab	6.5	a	0.8	a	0.93	a	0.8	a	74.8	a	0.5	abc	2.5	a
Gregory	4384	f	59.5	a	4.2	a	0.7	a	0.50	a	0.7	a	74.8	a	0.3	ijk	2.1	a
Jupiter	4021	g	57.5	abc	8.7	a	0.9	a	0.40	a	0.6	a	76.0	a	0.4	c-h	4.1	a
Means	5383		53.1		8.1		1.1		0.71		0.7		74.7		0.4		2.4	
CV	21		11		41		63		77		57		4		18		57	
P _{0.1}	<.0001		0.0469		NS		NS		NS		NS		NS		<.0001		NS	

Yoakum County

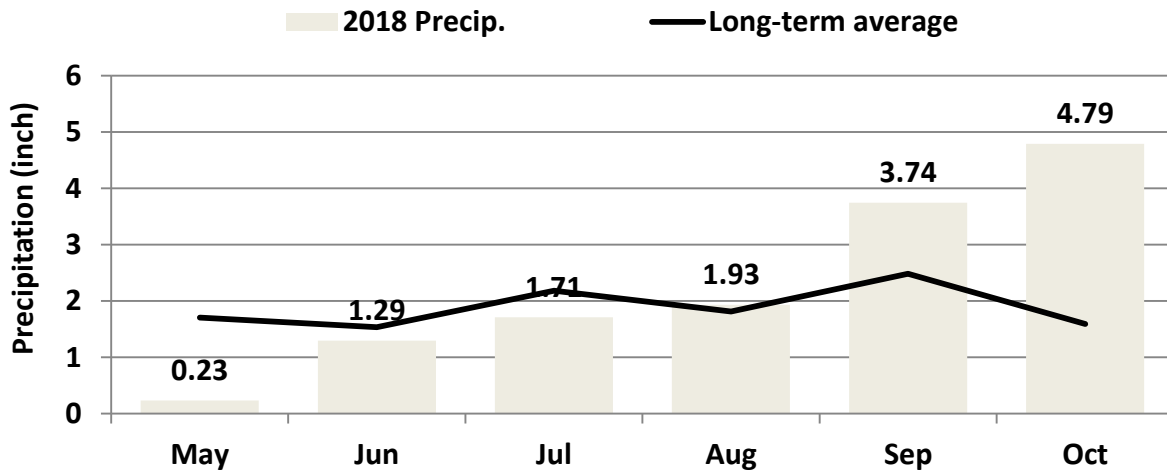
Cooperator: Algrano

County Extension Agent: Vacant

Soil type: Sandy

Planting/Digging/Harvest dates: May 7/ Oct. 4 (Spanish and Valencia)/ Oct. 11 (Runners and Virginias)

Previous crop: Nov. 13



Yoakum County

Yoakum co. Runner type variety

Variety	Yield lb/ac		ELK %		Med %		#1 %		DK %		OK %		TSMK %	
FloRun331	3654	a	23.8	a	11.2	e-h	2.8	g-j	0.16	a	2.6	bcd	62.5	a
TufRunner297	3615	ab	26.6	a	8.9	f-i	1.7	k	0.32	a	2.1	de	64.1	a
Florun107	3425	abc	25.0	a	14.6	cde	4.9	ab	0.03	a	4.0	a	62.5	a
TufRunner511	3387	abc	24.4	a	5.3	i	2.4	ijk	0.61	a	1.8	e	63.7	a
Georgia13M	3354	abc	25.4	a	14.9	cde	4.3	cde	0.08	a	3.1	bc	63.2	a
TX1082	3245	bcd	28.1	a	21.3	ab	5.4	ab	0.17	a	2.4	cde	66.6	a
RedRiverRunner	3229	bcd	27.7	a	11.8	efg	3.2	f-i	0.73	a	2.6	b-e	65.8	a
IPG 1210914	3180	cde	24.3	a	8.2	ghi	2.4	ijk	0.11	a	2.2	de	62.6	a
FLEXP	3104	c-f	25.3	a	6.0	hi	2.1	jk	0.28	a	2.3	cde	59.3	a
Webb	2886	d-g	24.9	a	12.7	efg	3.8	def	0.11	a	2.6	bcd	65.7	a
TamrunOL11	2848	d-g	27.6	a	18.3	bcd	4.6	bcd	0.23	a	1.9	de	68.2	a
Georgia14N	2777	efg	27.8	a	13.4	def	3.3	g-i	0.20	a	1.8	de	66.8	a
TX4429	2733	f	29.2	a	11.4	efg	2.5	h-k	0.23	a	1.9	de	65.5	a
Lariat	2723	f	28.1	a	15.1	cde	3.6	efg	0.51	a	2.1	de	66.6	a
TX4342	2695	g	27.5	a	12.2	efg	3.2	g-i	0.27	a	1.7	e	66.4	a
TR157	2673	g	22.5	a	10.2	e-i	2.0	jk	0.28	a	2.4	cde	65.4	a
MISC0476	2624	g	20.3	a	24.3	a	5.8	a	0.04	a	3.3	ab	67.3	a
IPG QR14	2608	g	23.1	a	19.0	bc	4.8	bc	0.03	a	3.1	abc	69.0	a
Georgia09B	2554	g	27.2	a	12.6	efg	3.3	fgh	0.25	a	2.1	de	65.2	a
Means	3017		25.7		13.2		3.5		0.24		2.4		65.1	
CV	10		26		28		18		171		26		5	
P _{0.1}	<.0001		NS		<.0001		<.0001		NS		0.0054		NS	

Yoakum County

Yoakum co. Spanish type variety

	Yield		ELK		Med		#1		DK		OK		TSMK	
Variety	lb/ac		%		%		%		%		%		%	
ACI1453	3038	a	9.1	cd	36.7	ab	9.0	c	0.03	c	5.5	a	71.2	c
ACISpan17	2842	ab	3.5	f	37.3	ab	12.4	b	0.43	ab	3.9	b	74.5	ab
Schubert	2619	bc	4.2	f	37.4	ab	21.9	a	0.40	a	1.9	cd	71.6	c
TamnutOL06	2467	cd	15.3	b	37.4	ab	4.7	d	0.04	c	1.4	d	72.3	bc
Ole	2390	cde	11.6	c	39.7	a	8.5	c	0.22	abc	1.9	cd	72.9	bc
AT9899	2254	def	4.8	ef	35.4	b	11.1	bc	0.14	bc	3.2	bc	73.1	bc
Olin	2118	fe	7.3	de	37.9	ab	10.1	bc	0.26	abc	2.8	bcd	74.4	ab
ACI236	2075	f	18.7	a	30.7	c	5.5	d	0.05	c	3.0	bc	76.5	a
Means	2475		9.3		36.6		10.4		0.19		3.0		73.3	
CV	8		20		8		19		104		34		2	
P _{0.1}	0.0002		<.0001		0.0487		<.0001		NS		0.0052		0.0157	

Yoakum co. Valencia type variety

	Yield		ELK		Med		#1		DK		OK		TSMK	
Variety	lb/ac		%		%		%		%		%		%	
IPG 08-4-1288	2712	a	28.9	a	28.1	d	3.6	e	1.14	a	1.4	d	76.4	a
IPG 12-4-274	2439	ab	26.1	a	28.5	d	3.8	e	2.07	a	1.6	cd	74.3	ab
VT10	2164	bc	6.2	c	35.4	abc	16.2	abc	1.40	a	2.4	a-d	70.3	bc
VT9	1866	cd	14.9	b	36.3	abc	8.2	d	1.01	a	1.3	d	70.1	c
308	1677	de	4.5	c	39.9	ab	14.4	c	1.12	a	2.1	bcd	69.9	cd
Val118	1454	ef	2.4	c	38.5	abc	19.0	ab	1.06	a	2.9	ab	67.7	cd
Val136	1443	ef	5.3	c	41.3	a	14.6	bc	1.40	a	2.5	abc	68.5	cd
310	1334	f	3.8	c	34.8	bc	18.9	ab	0.64	a	3.2	a	66.1	d
ValenciaA	1247	fg	3.5	c	33.3	cd	20.6	a	0.98	a	3.2	a	68.1	cd
309	958	g	4.9	c	39.3	ab	17.6	abc	1.01	a	2.7	ab	69.2	cd
Means	1729		10.1		35.5		13.7		1.18		2.3		70.1	
CV	14		24		12		24		54		31		4	
P _{0.1}	<.0001		<.0001		0.0096		<.0001		NS		0.0169		0.0057	

Yoakum County

Yoakum co. Virginia type variety

	Yield		ELK		Med		#1		DK		OK		TSMK	
Variety	lb/ac		%		%		%		%		%		%	
J20	3801	a	40.5	fg	14.0	c-g	1.7	e-h	1.32	a	1.4	a-d	68.0	hi
BaileyII	3675	a	46.1	a-d	12.0	d-g	1.6	e-h	0.33	a	0.9	def	72.5	b-e
Sullivan	3441	ab	43.3	b-f	15.6	a-d	2.3	c-f	1.08	a	1.0	def	71.3	d-g
Suggs	3430	abc	41.9	d-g	13.9	c-g	2.3	cde	0.49	a	1.3	a-e	72.7	b-e
Bailey	3414	a-d	47.4	ab	15.2	a-d	2.1	c-f	0.47	a	1.0	def	73.1	a-e
ACIX419	3240	a-e	40.2	fg	18.3	a	2.8	bcd	0.75	a	1.5	a	72.5	b-e
ACI433	3147	a-e	41.0	efg	16.1	abc	1.9	e-h	1.21	a	1.4	abc	72.2	c-f
FloridaFancy	3131	a-e	42.4	c-g	14.7	b-f	2.0	d-g	0.82	a	1.4	a-d	74.9	a
Wynne	3115	a-e	43.5	b-f	11.3	e-h	2.1	def	2.20	a	1.4	ab	70.4	fg
ACIX351	3076	a-e	42.1	d-g	14.7	c-f	3.3	ab	1.24	a	1.0	def	72.9	a-e
ACI442	3066	b-f	45.2	a-e	15.4	a-d	3.8	a	1.02	a	1.6	a	72.4	c-f
VT2	2859	b-f	45.7	a-e	13.6	c-g	1.7	e-h	1.03	a	0.8	f	73.4	a-d
ACI1850	2848	b-f	37.8	g	11.1	fgh	3.0	abc	2.62	a	1.0	b-f	66.7	i
VT4	2810	b-f	45.3	a-e	18.3	ab	1.9	e-h	0.65	a	0.8	f	73.7	abc
VT3	2750	b-f	45.3	a-e	14.8	a-e	1.9	e-h	0.17	a	0.8	f	74.6	ab
VT7	2668	c-f	43.9	b-f	15.6	a-d	1.5	fgh	1.51	a	1.0	c-f	73.1	a-d
VT8	2608	def	45.6	a-e	12.2	d-g	1.1	h	3.11	a	1.0	b-f	70.9	efg
AL464	2543	def	41.6	d-g	8.2	h	1.2	gh	3.89	a	0.9	ef	69.9	gh
Gregory	2494	def	43.8	b-f	10.7	gh	2.3	ede	1.04	a	1.3	a-e	71.3	d-g
VT1	2461	ef	44.0	b-f	15.5	a-d	1.5	fgh	2.07	a	1.1	b-f	73.3	a-d
VT5	2372	f	46.6	abc	13.9	c-g	1.5	fgh	1.60	a	1.0	def	73.5	abc
VT6	2140	f	51.2	a	7.9	h	1.4	fgh	3.88	a	0.8	f	72.2	c-g
Jupiter	1742	f	42.4	d-g	15.0	a-d	2.0	efg	0.98	a	1.3	a-e	71.7	c-g
Means	2906		43.8		13.8		2.0		1.46		1.1		72.0	
CV	19		8		19		30		91		27		2	
P _{0.1}	0.0075		NS		0.0026		0.0002		NS		0.0186		<.0001	

TEXAS A&M AGRI LIFE EXTENSION

<http://varietytesting.tamu.edu/peanuts/>



The information given herein is for educational purposes only. Reference to commercial products or trade names is made with the understanding that no discrimination is intended and no endorsement by Texas AgriLife Extension Service is implied.

Texas A&M AgriLife Extension Service are equal opportunity employers and program providers.

Issued in furtherance of Cooperative Extension Work in Agriculture and Home Economics, Acts of Congress of May 8, 1914, as amended, and June 30, 1914, in cooperation with the United States Department of Agriculture. Edward G. Smith, Director, Texas A&M AgriLife Extension Service, The Texas A&M University System.



SOIL & CROP SCIENCES
TEXAS A&M UNIVERSITY

TEXAS PEANUT VARIETY TRIAL